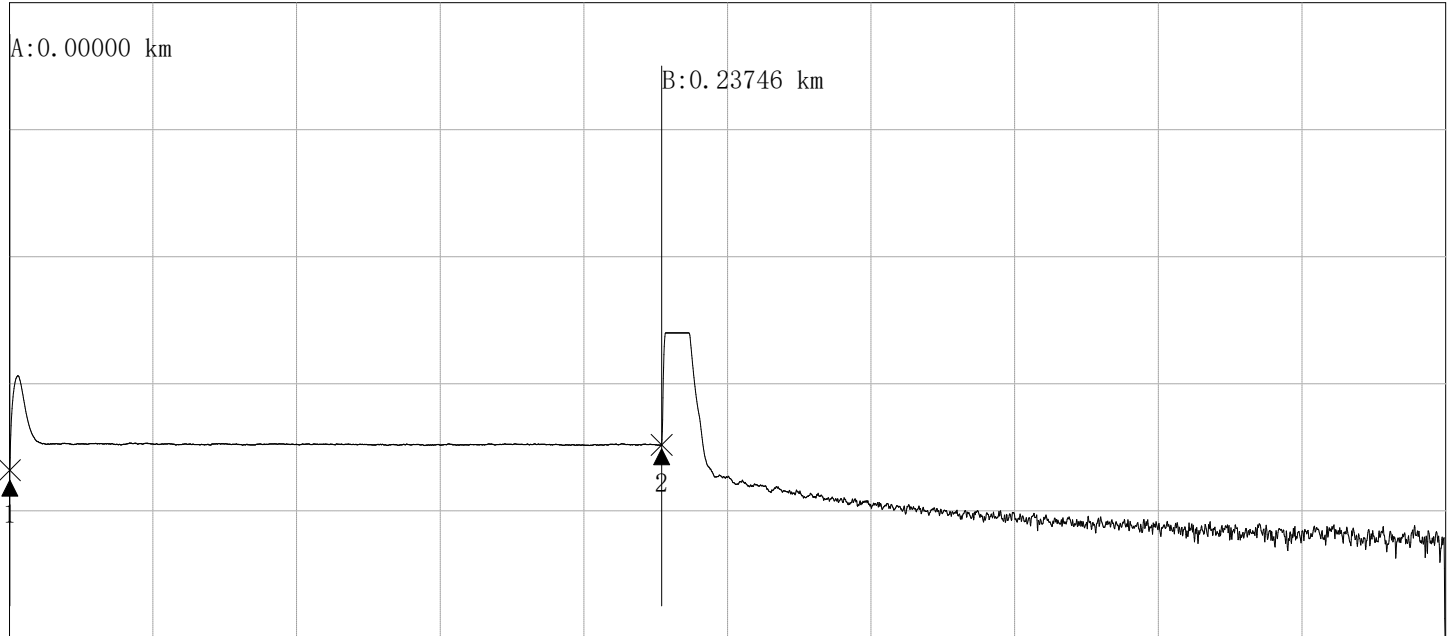


OTDR Test Report

File : otdr01.sor	File Date : 2021-12-6 14:06:00	Task :
Cable :	Start Postion : start postion	User :
Fiber : 0	End Postion : end postion	Device Name :
Operator : handler name	Fiber Type : Singlemode	
Wave : 1310 nm	Range : 500 m	Pulse : 30 ns
Test Mode : Average-Test	Average Times : 5	Ior : 1.46770
End Threshold : 10.00	Non-Reflection Threshold : 0.20	Reflection Threshold : 40.00

Test Trace

X:50m/Div, Y:10.0dB/Div



A-B Segment Information		A/B Points Information	
Distance(A-B):	0.23746 km	A Postion:	0.00000 km
Loss(A-B):	0.084 dB	B Postion:	0.23746 km
A-B Average Loss:	0.354 dB/km	A Power:	15.251 dBm
LSA Average Loss:	0.350 dB/km	B Power:	15.167 dBm
A-B Return Loss:	63.662 dB	----	----

Fiber Link Information

Number: 2 Link Length: 0.2375 km Total Loss: 0.084 dB Average Loss: 0.352 dB/km

Event Table

No	Type	Dis(km)	Aver. -L(dB/km)	Event-L(dB)	Return-L(dB)	Link-L(dB)
1	Reflect	0.0000	0.000	0.000	51.175	0.000
2	Reflect	0.2375	0.352	----	49.362	0.084